

[<Back](#) [Print](#)

The Greenwich Land Trust Newsletter

March 11, 2008



11 Acres Protected

Eleven acres of undeveloped land in the Byram River Watershed was deeded to the Land Trust as part of a 39 lot subdivision on the southern side of Glenville Road. "The Sherwood Farm Preserve is a wonderful balance of healthy forested upland and dense wetland

habitat that protects an important inland watercourse", says Daniel Barrett, Environmental Director.

In this issue

- **11 Acres Protected**
- **Gwynn Appointed Executive Director**
- **5 Directors Join Land Trust**
- **Scenes from Appletini 2008**
- **Notes from the Field**

[Learn more...](#)

Gwynn Appointed Executive Director



Virginia L. Gwynn has been appointed Executive Director of the Land Trust. Ms. Gwynn has been an active member of the Greenwich community, serving eight years as an elected member of the Greenwich Board of Education (most recently as Vice Chairman). "We are confident in Ginny's community knowledge, business experience, and commitment to open space preservation to lead the Land Trust through the 96-acre Aquarion Land Acquisition," says Bill Boysen, Land Trust President.

[Read story...](#)

5 Directors Join Land Trust

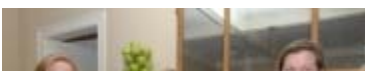


Five new directors were welcomed to the Land Trust board during the annual membership meeting at the end of 2007. The new directors are Tamara U. Ng-Yow, Peter F. Orszulak, Janice T. Richards, Cristine A. Robinson, and Theodore H. Walworth III. "These directors have brought new energy and ideas to the Land Trust. We are very pleased to have them as part of the organization's leadership and know they will actively promote the importance of land conservation in Greenwich," said

Ginny Gwynn, Executive Director of the Land Trust.

[Read bios of each new director...](#)

Scenes from Appletini 2008



Board Member Nora Grose and her husband Madison

graciously opened their home to Land Trust volunteers and distinguished supporters at the fourth annual Appletini Party. "The enthusiasm of everyone at the party reaffirmed the importance of our work. It really is wonderful to see long-time Land Trust supporters welcome our newer volunteers and land conservation ambassadors," said Bill Boysen.

[View event photos](#)

Notes from the Field



The land stewardship team is busy conducting several preserve-wide inventories of recently acquired land and making updates to existing property condition reports. Stewardship staff and our team of volunteers use data to monitor the health of a sanctuary over time. Volunteers help with preserve enhancement and ecological restoration projects such as invasive species removal, native plantings, and habitat restoration.

Sponsor Salute: Sarah Fey Design

Sarah Fey Design
203-536-0907
sarah@sarahfey.net

Membership is open to all.

- [Join or renew today!](#)

Email: kara@gltrust.org
Phone: 2023-629-2151
Website: <http://www.gltrust.org>

[Forward email](#)

✉ **SafeUnsubscribe**®

This email was sent to kara@gltrust.org, by kara@gltrust.org
[Update Profile/Email Address](#) | Instant removal with [SafeUnsubscribe](#)™ | [Privacy Policy](#).

Email Marketing by



The Greenwich Land Trust | 132 East Putnam Avenue | 2 East Suite D | Cos Cob | CT | 06807